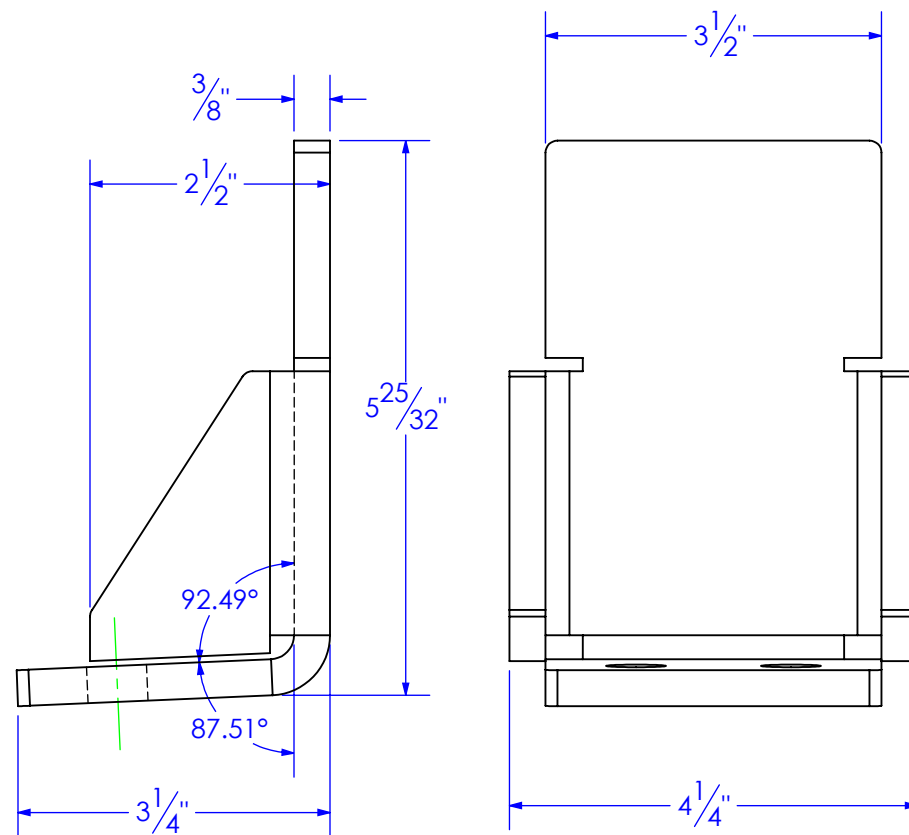
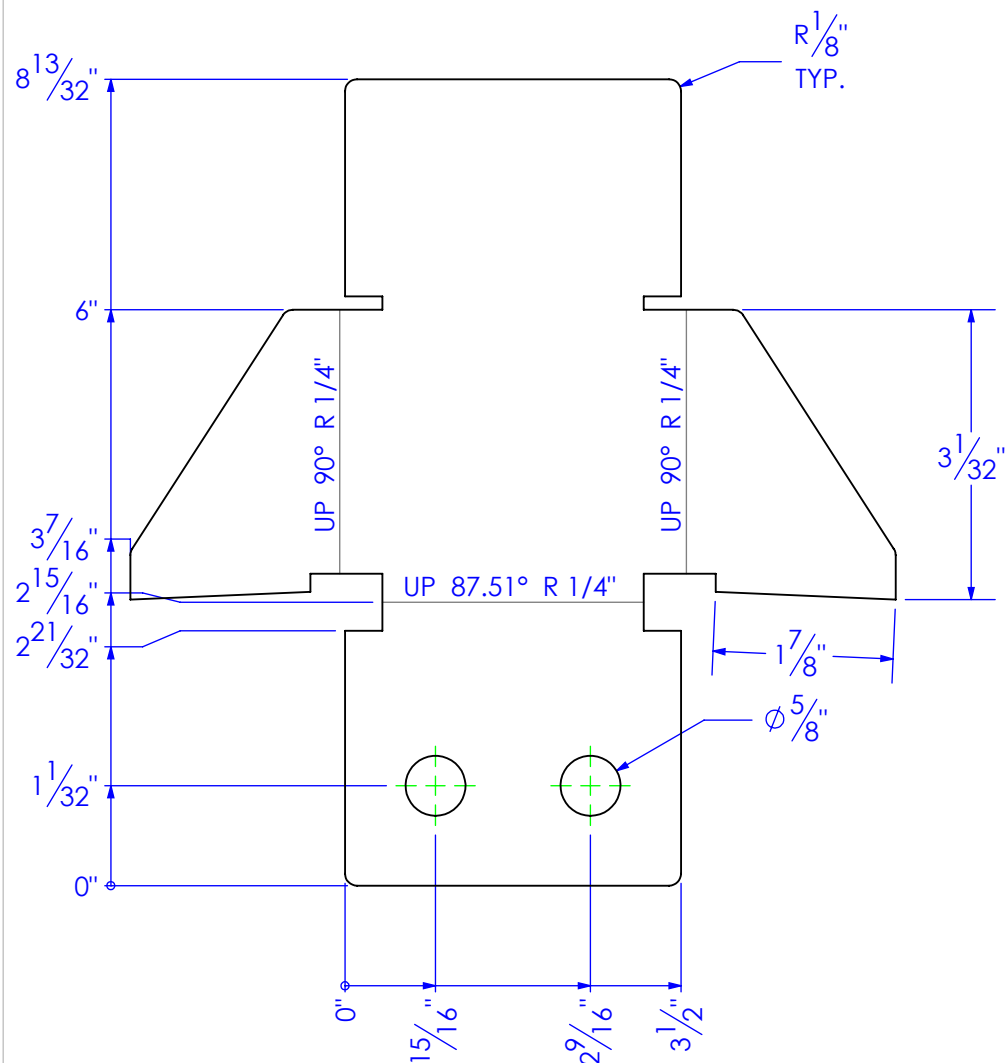


PART NUMBER	DESCRIPTION	MATERIAL
FP-CLL8 CNTR	LEVEL LOK, CENTER, CLL-8	3/8" HRS

REVISIONS			
REV.	DESCRIPTION	DATE	APPROVED
A	INITIAL RELEASE	11/5/2019	
B	REVISE BRAKE ANGLE	11/25/2019	
C	REVISE RELIEF CUTOUT	2/10/2020	



PROPRIETARY AND CONFIDENTIAL
THE INFORMATION CONTAINED IN THIS
DRAWING IS THE SOLE PROPERTY OF TRIPLE
C INC. ANY REPRODUCTION IN PART OR
AS A WHOLE WITHOUT THE WRITTEN
PERMISSION OF TRIPLE C, INC IS PROHIBITED.

UNLESS OTHERWISE SPECIFIED:
DIMENSIONS ARE IN INCHES
TOLERANCES:
FRACTIONAL $\pm 1/16$
ANGULAR: MACH ± 1 BEND \pm
TWO PLACE DECIMAL ± 010
THREE PLACE DECIMAL ± 005

MATERIAL 3/8" HRS
DO NOT SCALE DRAWING

	NAME	DATE
DRAWN	ETHAN	2/10/2020
PART #	FP-CLL8-CNTR	
ASM #	Asm #	
COMMENTS:		
CLL-8, DRIVER AND PASSENGER, CENTER LEVEL LOK		

P.O. BOX 248, SABETHA, KS 66534
(785) 284-3674 FAX (785) 284-3931



SIZE	DWG. NO.	REV
A	90-1809	C
SCALE: 1:2	WEIGHT: 3.96	SHEET 1 OF 1